



GARMOR HMMWV LAND, AIR & SEA



GArmor Hmmwv Land, Air & Sea is a U.S.-based armored vehicle manufacturer specializing in advanced ballistic protection solutions for law enforcement, government, security, and civilian clients. We design and integrate armored vehicles and protection systems engineered for real-world threats, operational reliability, and mission readiness. From executive protection platforms to tactical and specialty vehicles, GArmor is committed to delivering dependable protection without compromising performance, drivability, or quality. Maximizing the synergy between design, manufacturing & sale, delivering exceptional Armored products & services to our customers.

INFO@GARMOR.US | 305-849-5826



ON-SITE ARMORING SOLUTIONS

WE COME TO YOU

NIJ STANDARD 0108.01 (LEVEL IIIA) THREAT PROTECTION

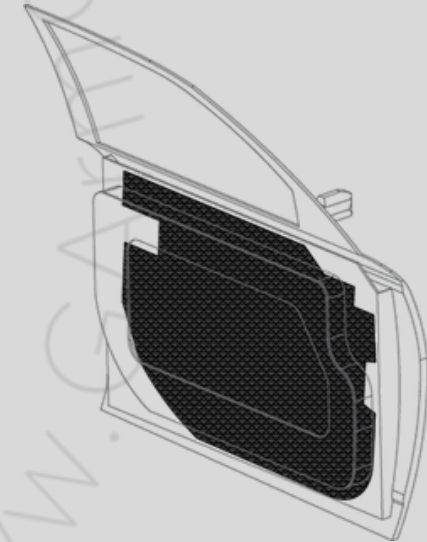
- 9mm Luger 124gr FMJ 1400 +/- 50 fps – 426 +/- 15 m/s
- 44 MAG 240gr SWC GC 1400 +/- 50 fps – 426 +/- 15 m/s

NIJ STANDARD 0108.01 (LEVEL III) RIFLE THREAT PROTECTION

- 7.62mm (308 Winchester) FMJ (M80) 150gr 2750 +/- 50 fps



Lightweight armored door panels



Fastest installation in the industry



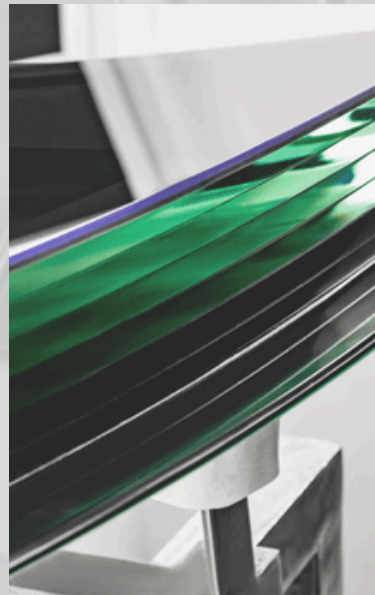
ON-SITE ARMORING SOLUTIONS

There is no need to ship your vehicles across the country or wait weeks for upgrades for up-armor.

We bring certified ballistic protection directly to your location, completing most installations in just one to two days per vehicle.



- Eliminates transportation logistics
- Reduces downtime
- Delivers immediate operational readiness



Multi-layered Ballistic Level Glass





GARMOR X5



INFO@GARMOR.US | 305-849-5826

CONFIDENTIAL: The entire contents of this document and contents, text, pictures, market research, database, color, structure and design, selection and presentation of material are protected by copyright and intellectual property of GARMOR HMMWV LAND, AIR & SEA. The brand, logo and content are protected by copyright and intellectual property rights owned by GARMOR HMMWV LAND, AIR & SEA. Images used in this document are for illustration purposes only.

Information subject to export control laws. The information contained within this email is subject to the International Traffic in Arms Regulation (ITAR) or the Export Administration Regulations (EAR). This information shall not be exported, released, or disclosed to foreign nationals inside or outside the United States without first complying with the export authorization requirement of the ITAR and/or the EAR.

Copyright 2026 © GARMOR HMMWV LAND, AIR & SEA. All Rights Reserved.



GARMOR X5 SPECS LE

GARMOR X5 Law Enforcement Vehicle Configuration:

Color: Black, Army Green or Desert Sand (egg shell finish)

Built on an F600 chassis:

1. 6.7L Ford Powerstroke Turbo-Diesel
2. Fuel Type: Diesel
3. Def System
4. Driveline: 4x4 w/Low & High
5. Steering: Recirculating ball, Hydraulic assisted
6. Suspension Front: Front – Solid Twin-Coil Monobeam Axle, Upgraded Coils, Shocks
7. Suspension Rear: Solid Axle w/upgraded leaf springs
8. Gear ratio: 4.88 with limited slip differential
9. 335/80R20 tires with run flats
10. Brakes:
 - a. Front: Upgraded Alcon calipers
 - b. Rear: OEM vented rotors
11. Receiver hitch

Protection

1. .50 cal ball: steel and glass
2. Spaced armor on sides of vehicle (None under vehicle)
3. Run flats
4. Fire Stick



Capsule

1. Doors: 5
2. Seating 2 + 6
 - a. (2) Rear facing jump seats
 - b. Rear Area:
 - i. (6) Bucket Seats or (2) Bench Seats
3. Oversized Roof hatch opening (larger than UMG / maximize size to turret bearing)
4. Sniper stand
5. Side storage boxes for rope, tools, etc
6. Gun ports: Total of 11
 - a. Gun ports in driver and passenger doors
7. Storage under rear seats
8. Rear Air Conditioner



GARMOR X5 SPECS LE

Exterior Capsule

1. (4) Tool boxes on side of capsule
2. (6) Lower side boxes
3. Side steps on both sides
4. Large rear step
5. (8) Grab handles on sides and rear of capsule
6. Ramps for ingress into rear door (storage on rear of capsule)
7. Front and rear bumpers
8. Turret with oversized hatch (maximize size to bearing)
9. Spare tire mounted on roof
10. Roof Rack for mounting provisions for antennas

Other

1. GA Insignias
2. Bullet protection skirts for doors (when open) secure to doors
3. EMP shield for engine
4. Spare tire (not mounted)
5. Front mounted 16,500 lb winch
6. Manual Ram with exterior storage on side of capsule, GA insignia on ram

Lighting / Electrical

1. 4 Remote spot lights located in:
 - a. (2) front roof corners (with remote control)
 - b. (2) Rear roof corners (with remote control)
2. PA/ Siren System
3. (4) camera/monitor system with cameras facing front/rear/sides
4. Air Horn
5. Radio mount bracket for police radios
6. Forward facing LED light bar mounted on roof
7. Emergency Equipment Lights White and Blue Strobe
 - a. (2) Side front fender
 - b. (2) Side Rear fender
 - c. (2) on each side of roof
8. Interior lights – White / Red
9. 2000 watt inverter with USB and electrical outlets in storage box under rear seat
10. Chemical Scrubber





GARMOR X5 SPECS DOMESTIC

GARMOR X5 Domestic GARMOR X5 Vehicle Configuration:

Protection

1. 7.62 ball: steel and glass
2. Spaced armor on sides of vehicle (None under vehicle)
3. Run flats

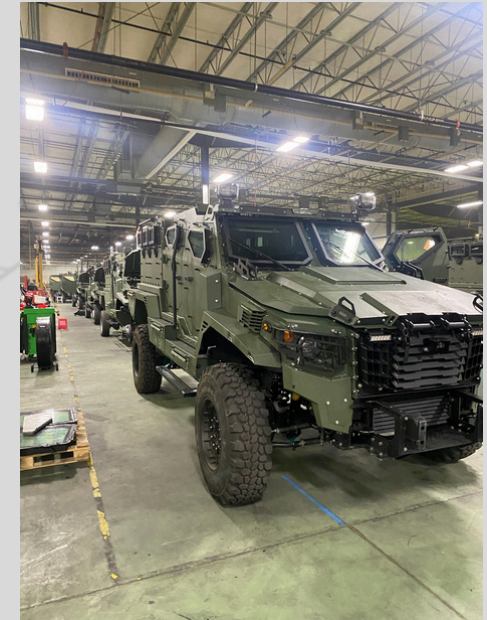
Color: Black, Army Green or Desert Sand (egg shell finish)

Built on an F600 chassis:

1. 6.7L Ford Powerstroke Turbo-Diesel
2. Fuel Type: Diesel
3. Def System
4. Driveline: 4x4 w/Low & High
5. Steering: Recirculating ball, Hydraulic assisted
6. Suspension Front: Front – Solid Twin-Coil Monobeam Axle, Upgraded Coils, Shocks
7. Suspension Rear: Solid Axle w/upgraded leaf springs
8. Gear ratio: 4.88 with limited slip differential
9. 335/80R20 tires with run flats
10. Brakes:
 - a. Front: Upgraded Alcon calipers
 - b. Rear: OEM vented rotors
11. Receiver hitch

Capsule

1. Doors: 5
2. Seating 2 + 6
 - a. (2) Rear facing jump seats
 - b. Rear Area:
 - i. (6) Bucket Seats or (2) Bench Seats
 3. Oversized Roof hatch opening (larger than UMG / maximize size to turret bearing)
 4. Side storage boxes for rope, tools, etc
 5. Gun ports: Total of 11
 - a. Gun ports in driver and passenger doors
 6. Storage under rear seats
 7. Rear Air Conditioner





GARMOR X5 SPECS DOMESTIC

Lighting / Electrical

1. 4 Remote spot lights located in
 - a. (2) front roof corners (with remote control)
 - b. (2) Rear roof corners (with remote control)
2. PA/ Siren System
3. (4) camera/monitor system with cameras facing front/rear/sides
4. Air Horn
5. Radio mount bracket for police radios
6. Forward facing LED light bar mounted on roof
7. Emergency Equipment Lights White (blue optional)
 - a. (2) Side front fender
 - b. (2) Side Rear fender
 - c. (2) on each side of roof
8. Interior lights – White / Red
9. 2000 watt inverter with USB and electrical outlets in storage box under rear seat
10. Exhaust fan

Note: X5 UMG version (Ukrainian build) has additional bomb plate protection and a chemical scrubber. Contact GArmor for additional information. 305-849-5826

Custom upgraded interior upon request. (Domestic)

Exterior Capsule

1. (4) Tool boxes on side of capsule
2. (6) Lower side boxes
3. Front and rear bumpers
4. Roof Rack for mounting provisions for antennas

Other

1. GA Insignia
2. EMP shield for engine
3. Spare tire (not mounted)
4. Front mounted 16,500 lb winch





GARMOR X4T



INFO@GARMOR.US | 305-849-5826

CONFIDENTIAL: The entire contents of this document and contents, text, pictures, market research, database, color, structure and design, selection and presentation of material are protected by copyright and intellectual property of GARMOR HMMWV LAND, AIR & SEA. The brand, logo and content are protected by copyright and intellectual property rights owned by GARMOR HMMWV LAND, AIR & SEA. Images used in this document are for illustration purposes only.

Information subject to export control laws. The information contained within this email is subject to the International Traffic in Arms Regulation (ITAR) or the Export Administration Regulations (EAR). This information shall not be exported, released, or disclosed to foreign nationals inside or outside the United States without first complying with the export authorization requirement of the ITAR and/or the EAR.

Copyright 2026 © GARMOR HMMWV LAND, AIR & SEA. All Rights Reserved.



GARMOR X4T



CONFIDENTIAL: The entire contents of this document and contents, text, pictures, market research, database, color, structure and design, selection and presentation of material are protected by copyright and intellectual property of GARMOR HMMWV LAND, AIR & SEA. The brand, logo and content are protected by copyright and intellectual property rights owned by GARMOR HMMWV LAND, AIR & SEA. Images used in this document are for illustration purposes only.

Information subject to export control laws. The information contained within this email is subject to the International Traffic in Arms Regulation (ITAR) or the Export Administration Regulations (EAR). This information shall not be exported, released, or disclosed to foreign nationals inside or outside the United States without first complying with the export authorization requirement of the ITAR and/or the EAR.

Copyright 2026 © GARMOR HMMWV LAND, AIR & SEA. All Rights Reserved.



GARMOR X4T





GARMOR X4T SPECS

X4T Domestic Truck Version: GARMOR X4T Vehicle Configuration:

Protection

1. 7.62 ball steel and glass
2. Spaced armor on sides of vehicle
3. Run flats

Color: Black Army Green or Desert Sand (egg shell finish)

Built on an F600 chassis:

1. 6.7L Ford Powerstroke Turbo-Diesel
2. Fuel Type: Diesel
3. Def System
4. Driveline: 4x4 w/Low & High
5. Steering: Recirculating ball, Hydraulic assisted
6. Suspension Front: Front – Solid Twin-Coil Monobeam Axle, Upgraded Coils, Shocks
7. Suspension Rear: Solid Axle w/upgraded leaf springs
8. Gear ratio: 4.88 with limited slip differential
9. 335/80R20 tires with run flats
10. Brakes:
 - a. Front: Upgraded Alcon calipers
 - b. Rear: OEM vented rotors
11. Receiver hitch

Capsule

1. Doors: 4
2. Seating 2 + 2 ; All facing forward
 - a. Rear 2 seats, option jump seats or OEM long bench seat
3. Roof hatch opening
4. Side storage boxes for rope, tools, etc
5. Gun ports: Total of 5; 1 in each side door/1 in rear wall
6. Front and rear bumpers
7. Rear wall (towards pick-up bed)
 - a. Two windows (same as driver/commander doors)
 - b. (1) Gun port between or above the seats
8. Rear Air Conditioner



GARMOR X4T SPECS

Pickup bed area

1. Tailgate
2. Tool boxes mounted on outside (like X5 UMG)
3. (2) Bench seats

Other

1. GA Insignia
2. EMP shield for engine
3. Spare tire (not mounted)
4. Front mounted 16,500 lb winch

Lighting / Electrical

1. 4 Remote spot lights located in
 - a. (2) front roof corners (with remote control)
 - b. (2) Rear roof corners (with remote control)
2. PA/ Siren System
3. (2) camera/monitor system with cameras facing front/rear
4. Air Horn
5. Radio mount bracket (same as Ukraine X5 – no radios)
6. Forward facing LED light bar mounted on roof
7. Emergency Equipment Lights White Strobe (Blue optional)
 - a. (2) Side front fender
 - b. (2) Side Rear fender
 - c. (1) on each side of roof
8. Interior lights – White / Red
9. Exhaust Fan



GARMOR X3

PROTOTYPE
&
TESTING

INFO@GARMOR.US | 305-849-5826

CONFIDENTIAL: The entire contents of this document and contents, text, pictures, market research, database, color, structure and design, selection and presentation of material are protected by copyright and intellectual property of GARMOR HMMWV LAND, AIR & SEA. The brand, logo and content are protected by copyright and intellectual property rights owned by GARMOR HMMWV LAND, AIR & SEA. Images used in this document are for illustration purposes only.

Information subject to export control laws. The information contained within this email is subject to the International Traffic in Arms Regulation (ITAR) or the Export Administration Regulations (EAR). This information shall not be exported, released, or disclosed to foreign nationals inside or outside the United States without first complying with the export authorization requirement of the ITAR and/or the EAR.

Copyright 2026 © GARMOR HMMWV LAND, AIR & SEA. All Rights Reserved.



GARMOR X3

GARMOR X3 Domestic GARMOR X3 Vehicle Configuration:

Protection

1. 7.62 ball: steel and glass
2. Spaced armor on sides of vehicle (None under vehicle)
3. Run flats

Color: Black, Army Green or Desert Sand (egg shell finish)

Built on an F600 chassis:

1. 6.7L Ford Powerstroke Turbo-Diesel
2. Fuel Type: Diesel
3. Def System
4. Driveline: 4x4 w/Low & High
5. Steering: Recirculating ball, Hydraulic assisted
6. Suspension Front: Front – Solid Twin-Coil Monobeam Axle, Upgraded Coils, Shocks
7. Suspension Rear: Solid Axle w/upgraded leaf springs
8. Gear ratio: 4.88 with limited slip differential
9. 335/80R20 tires with run flats
10. Brakes:
 - a. Front: Upgraded Alcon calipers
 - b. Rear: OEM vented rotors
11. Receiver hitch



Capsule

1. Doors: 3
2. Seating 2 + 6
 - a. (2) Rear facing jump seats
 - b. Rear Area:
 - i. (6) Bucket Seats or (2) Bench Seats
3. Oversized Roof hatch opening (larger than UMG / maximize size to turret bearing)
4. Side storage boxes for rope, tools, etc
5. Gun ports: Total of 11
 - a. Gun ports in driver and passenger doors
6. Storage under rear seats
7. Rear Air Conditioner



GARMOR X3

Lighting / Electrical

1. 4 Remote spot lights located in
 - a. (2) front roof corners (with remote control)
 - b. (2) Rear roof corners (with remote control)
2. PA/ Siren System
3. (4) camera/monitor system with cameras facing front/rear/sides
4. Air Horn
5. Radio mount bracket for police radios
6. Forward facing LED light bar mounted on roof
7. Emergency Equipment Lights White (blue optional)
 - a. (2) Side front fender
 - b. (2) Side Rear fender
 - c. (2) on each side of roof
8. Interior lights – White / Red
9. 2000 watt inverter with USB and electrical outlets in storage box under rear seat
10. Exhaust fan

The GARMOR X3 will be offered in both domestic and law enforcement configurations. The vehicle is currently in prototype and testing, with a planned Q1 2026 launch.

Exterior Capsule

1. (4) Tool boxes on side of capsule
2. (6) Lower side boxes
3. Front and rear bumpers
4. Roof Rack for mounting provisions for antennas

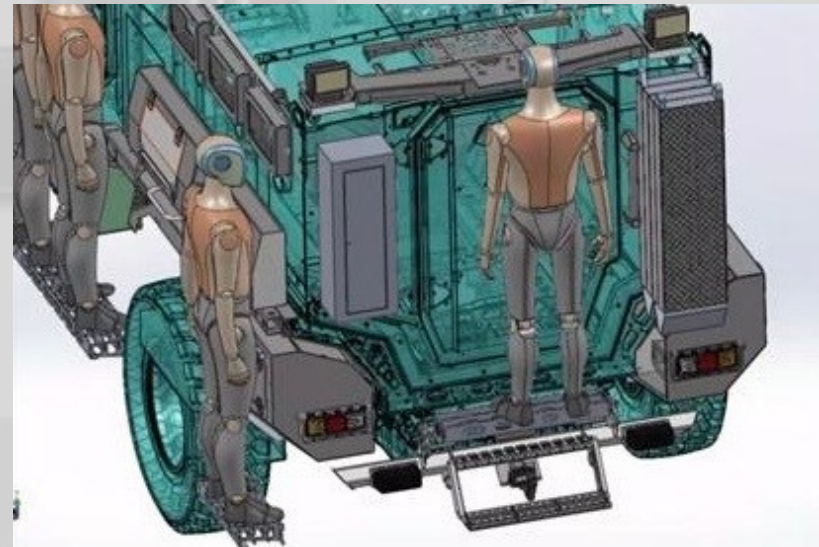
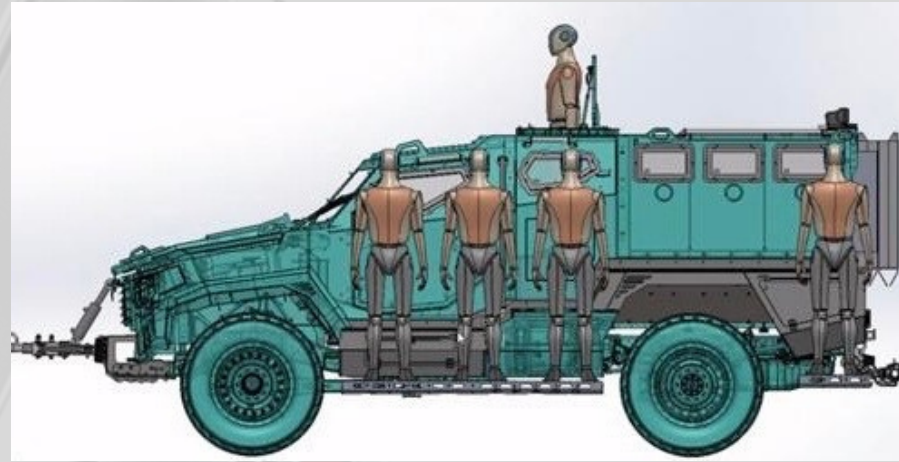
Other

1. GA Insignia
2. EMP shield for engine
3. Spare tire (not mounted)
4. Front mounted 16,500 lb winch



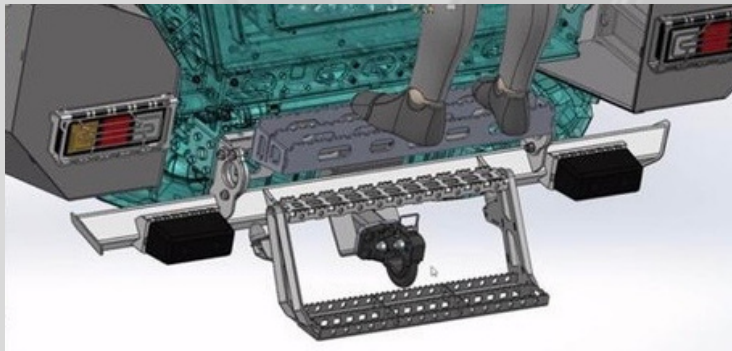


GARMOR X3





GARMOR X3





ARMORED TRUCKS



INFO@GARMOR.US | 305-849-5826

CONFIDENTIAL: The entire contents of this document and contents, text, pictures, market research, database, color, structure and design, selection and presentation of material are protected by copyright and intellectual property of GARMOR HMMWV LAND, AIR & SEA. The brand, logo and content are protected by copyright and intellectual property rights owned by GARMOR HMMWV LAND, AIR & SEA. Images used in this document are for illustration purposes only.

Information subject to export control laws. The information contained within this email is subject to the International Traffic in Arms Regulation (ITAR) or the Export Administration Regulations (EAR). This information shall not be exported, released, or disclosed to foreign nationals inside or outside the United States without first complying with the export authorization requirement of the ITAR and/or the EAR.

Copyright 2026 © GARMOR HMMWV LAND, AIR & SEA. All Rights Reserved.



ARMORED TRUCKS

INCLUDED

ARMOR SYSTEM

- B6 Ballistic Passenger Cabin
- Armored Doors
- Roof
- Side Panels
- Rear Cab Wall
- Fender Walls
- UL7 Ballistic Glass

INTERIOR

- Signature Dash & Center Console
- LED Backlit Gauges
- New Performance Steering Wheel
- New High Back Vinyl Seats (Black)

MECHANICAL

- New 6.5L Turbo Diesel
- 4 Speed Automatic

PAINT

- Grey Exterior: Matte Textured
- Black Interior: Matte Textured
- Dash/Doors: Satin

WHEELS/TIRES

- 37x12.5" Tires
- 17x9" Wheels

LIGHTING

- LED Headlights
- LED Running Lights
- LED Fog Lights

EXTERIOR ACCESSORIES

- HD Brush Guard
- HD Rear Bumper (not pictured)
- Front Winch Plate
- New Side Mirrors





ARMORED TRUCKS





ARMORED SUV



INFO@GARMOR.US | 305-849-5826

CONFIDENTIAL: The entire contents of this document and contents, text, pictures, market research, database, color, structure and design, selection and presentation of material are protected by copyright and intellectual property of GARMOR HMMWV LAND, AIR & SEA. The brand, logo and content are protected by copyright and intellectual property rights owned by GARMOR HMMWV LAND, AIR & SEA. Images used in this document are for illustration purposes only.

Information subject to export control laws. The information contained within this email is subject to the International Traffic in Arms Regulation (ITAR) or the Export Administration Regulations (EAR). This information shall not be exported, released, or disclosed to foreign nationals inside or outside the United States without first complying with the export authorization requirement of the ITAR and/or the EAR.

Copyright 2026 © GARMOR HMMWV LAND, AIR & SEA. All Rights Reserved.



ARMORED SUV

GArmor's Armored SUVs are a statement of refined strength – an elite fusion of security, performance, and elegance for discerning individuals who require uncompromised protection in every environment.



Encased in cutting edge, lightweight ballistic armor, this vehicle offers discreet yet comprehensive protection to the globally recognized CEN 1063 BR6 standard. Every inch of the vehicle is thoughtfully shielded, including the implementation of GArmor's armored overlap system, designed to reinforce door seams and eliminate vulnerable entry points.



ARMORED SUV SECURITY FEATURES

Security Features:

- Premium multi-layer ballistic glass
- 360-degree perimeter armoring
- Protected compartments for battery and ECM
- Armored fuel tank enclosure
- Overlap protection at all structural joints
- Run-Flat tire technology for continued mobility under duress
- Reinforced door hinges and soft-close assist for armored doors
- Driver-side operable window for controlled communication
- Concealed siren and PA system
- Tactical LED strobe lighting
- Fire suppression stick
- Full blackout capability for discreet movement





ARMORED SUV SECURITY FEATURES



The GArmor Armored SUV offers more than just secure travel. It is a mobile command environment tailored for high-profile individuals who demand silent strength, superior comfort, and unmatched presence in any situation.

Designed with precision and engineered for comfort, the Armored SUV offers an exceptional ride quality through its advanced independent rear suspension. The cabin is a sanctuary of luxury – spacious, meticulously finished, and built to provide executive-level comfort whether on the move or at a standstill.



LD-1 ARMORED ATV



INFO@GARMOR.US | 305-849-5826

CONFIDENTIAL: The entire contents of this document and contents, text, pictures, market research, database, color, structure and design, selection and presentation of material are protected by copyright and intellectual property of GARMOR HMMWV LAND, AIR & SEA. The brand, logo and content are protected by copyright and intellectual property rights owned by GARMOR HMMWV LAND, AIR & SEA. Images used in this document are for illustration purposes only.

Information subject to export control laws. The information contained within this email is subject to the International Traffic in Arms Regulation (ITAR) or the Export Administration Regulations (EAR). This information shall not be exported, released, or disclosed to foreign nationals inside or outside the United States without first complying with the export authorization requirement of the ITAR and/or the EAR.

Copyright 2026 © GARMOR HMMWV LAND, AIR & SEA. All Rights Reserved.



LD-1 SPECIFICATIONS

BALLISTICS:

- Ballistic surround shield utilizes NIJ III / CEN B-6 material
- UL-5 ballistic glass on all four sides
- All ballistic panels and glass are individually replaceable

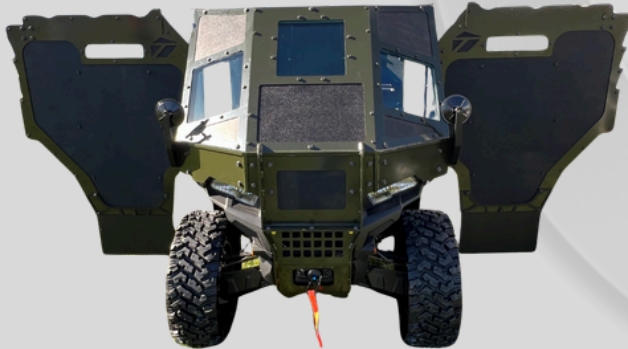


ACCESSORIES:

- Michelin X-Tweels - airless tires
- Door Extensions - NIJ IIIA
- Ballistic Roof - NIJ III
 - required for roof accessory
- Rear Utility Panel
- Maintenance tool kit
- LD-1 Operator Training

FEATURES:

- Quick-open doors: 120 in/305 cm of ballistic cover
- MOLLE panels
- T-bar and Rear Hand Straps
- Fire suppression
- Integrated barrel rests on top and sides of the doors
- Top and front rail accessory mounting capability
- Modular design for convenient maintenance and part replacement
- Mounted with no permanent modifications to the ATV





LD-1 SPECIFICATIONS

Protection

- NIJ III / CEN B-6 material
- 360 degree protection for operator ballistic protection up to 120" wide
- Designed to ROP standards

CAPABILITY

- All Terrain
- Indoor/Outdoor ability
- Navigate tight spaces
- Fast and maneuverable

VALUE

- Versatile capabilities
- Practical accessories
- Replaceable panels



MANEUVERABILITY:

- Length: 84.5 in / 215cm
- Width: 52 in / 132 cm
- Height: 64.25 in / 163 cm
- Weight: 1,316 lb / 597 kg
- Turn Radius: 84 in / 213 cm
- Ground Clearance: 9.5 in / 24 cm
- Tow Capacity: 1,500 lb / 680 kg
- Winch Capacity: 3,500 lb / 1,588 kg
- Wheelbase: 53 in / 134.6 cm



WINDOW EXTENSION AND ROOF PANEL



An additional
5.25" x 24.5"
(13.3 cm x 62.2
cm) ballistic
protection.

Breakaway roof
with open sides
to allow for
engagement.



- Roof: NIJ III / CEN B- 6 ballistic material
- Window: UL-5 glass
- Easily installed / removed as needed
- Fits all LD-1 models with NO modifications



DOOR EXTENSION ACCESSORY



Up to an additional 16.5"x16"
(41.9 cm x 40.6 cm) ballistic
protection



NIJ IIIA Material	Quick-deploy second extension
Permanent addition of 16.5" x 9" (41.9 cm x 22.8 cm) ballistic protection	Second extension offers an additional 16.5" x 7" (41.9 cm x 17.7 cm) protection
Fits all LD-1 Models, no modification necessary	Stops up to .44 Magnum, and protects against ricochet



FENDER ARMOR



Standard on all future LD-1 units

NIJ III / CEN B-6 Material	Integrated organizational panels
Up to 25.5"x11" (64.8 cm x 27.9 cm) ballistic protection on each side	Fits all LD-1 Models, no modification necessary



USE CASE - SWAT



Armored Protection NIJ III / CEN B-6



LD-1 Use Case:

SWAT

- Structure Approach
- Barricaded Subject
- Active Shooter



- Lightweight, agile platform for soft terrain and spaces between structures.
- Both concealment and cover for operators.
- Full ballistic protection for final approach or delivery of less lethal munitions, drone/robot.
- Speed and maneuverability inside structures.
- Direct transport to the threat.
- Transit of personnel, equipment, and supplies during extended operations.
- Provide cover for evacuation of victims/personnel.



Reduce risk for operators

Reduce physical wear on personnel



USE CASE - SWAT

Perspective:

*Captain, 22-year law enforcement officer with 13 years on SWAT.
Team commander of joint tactical team.*



Scenario #1: Structure Approach

Current tactics – Initial approach with MRAP or Armored Personnel Carrier (APC) – extremely heavy and oversized. Perimeter, hasty, or QRF teams utilizing fences, trees, or vinyl/aluminum buildings as concealment with lack of cover. Final approach employing single ballistic shield to protect multiple operators.

Solution: The LD-1, which is well suited with its light weight and small platform, can be utilized to traverse soft terrain and small spaces between structures. It can be positioned in urban and rural environments to offer operators both cover and concealment allowing the final approach with full ballistic protection for team during window breaking, hostage rescue, apprehension, or less lethal munition or robot/drone deployment. The outcome is overall risk reduction to personnel.

Scenario #2: Barricaded Subject / Active Shooter

Current tactics – Operators clear structure on foot with ballistic vests.

Solution: The speed and maneuverability of the LD-1 matches the fluid and fast paced nature of an active shooter event. It offers direct transportation to the threat to engage the suspect with 360° ballistic protection for the operator.

Additional Scenarios: Transportation of personnel, equipment, and supplies during natural/manmade disasters, or extended operations to limit the exhaustion of operators. K-9 and suspect searches in diverse environments – between houses/buildings (urban), fields, creeks, or wooded (rural) areas. Ballistic capability in outdoor venues where there exists a risk for gunfire or objects thrown or used as weapons.



USE CASE - METRO PD



Armored Protection NIJ III / CEN B-6



LD-1 Use Case:

*Major Metropolitan
Police Department*

- Large Structure Clearing
- Crowd Control
- Daily Operations



- Navigate inside large buildings.
- High speed capability through wide corridors.
- Provide cover for evacuation of victims/personnel.
- Slow speed shield for methodical movements.



- Capable in various outdoor terrain.
- Maneuverable in narrow streets and alleys.
- Ballistic protection for perimeter personnel.
- Safe transport of supplies, equipment, or injured individuals.



Reduce risk for officers

Reduce physical wear on personnel



USE CASE - METRO PD

Perspective:

Lieutenant, 13-year Law Enforcement Officer in major metropolitan area, with specialization in operations, supervision, and negotiations.



Scenario #1: Large Structure Clearing

Examples: Warehouses, malls, stadiums, convention centers, hospital complexes, etc.

Current tactics - vehicle perimeter, officers utilizing vests and hand-held shields, stack formation, methodically and slowly clearing of each aisle/hall.

Solution: Utilizing the LD-1 allows safer and more efficient techniques, with reduction in physical wear on personnel. The new operation method includes NIJ level III protection for perimeter personnel in all terrain. Additionally, driving the LD-1 directly inside the building through any double or overhead door allows for rapid recourse to the threat. Departments may opt for speed and maneuverability through corridors or slower movement with the LD-1 doors providing cover for personnel. The outcome is overall risk reduction for officers.

Scenario #2: Crowd Control / Riot Control

Current tactics - LEOs on bicycles, motorcycles, ATVs, or on foot utilizing tactical vests and hand-held shields.

Solution: The LD-1 represents a significant elevation in capabilities in handling crowds and riots with an increase in the show of force but not to the extent of military. Utilizing multiple LD-1s, in addition to officers on foot protected by 120" of cover provided by the open doors, LEOs can quickly clear an unruly outdoor area. Additionally, the LD-1 can be utilized as transport for things such as wounded individuals, supplies, or towing of small equipment.

Additional Scenarios: Daily reactive operations, especially when surrounding houses in tight, urban settings that have narrow sidewalks, alleys, and side yards. The space/weight restrictions of the GArmor X5 and Bearcat/MRAP vehicle limit their contributions.